



AUSTRALIAN ALPS

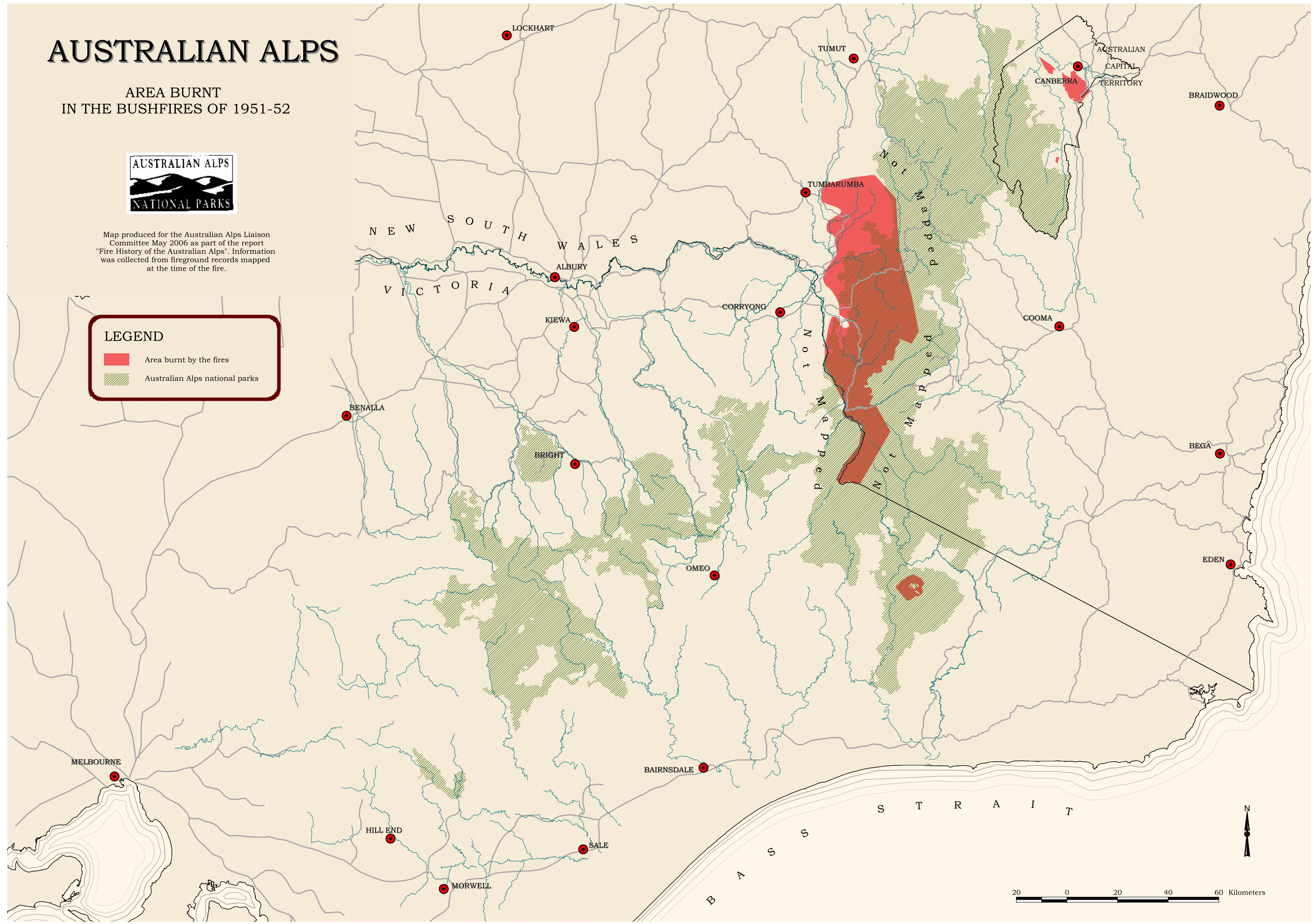
AREA BURNT
IN THE BUSHFIRES OF 1951-52



Map produced for the Australian Alps Liaison Committee May 2006 as part of the report "Fire History of the Australian Alps". Information was collected from fireground records mapped at the time of the fire.

LEGEND

-  Area burnt by the fires
-  Australian Alps national parks



20 0 20 40 60 Kilometers