

Management effectiveness evaluations: putting them into practice for the Australian Alps

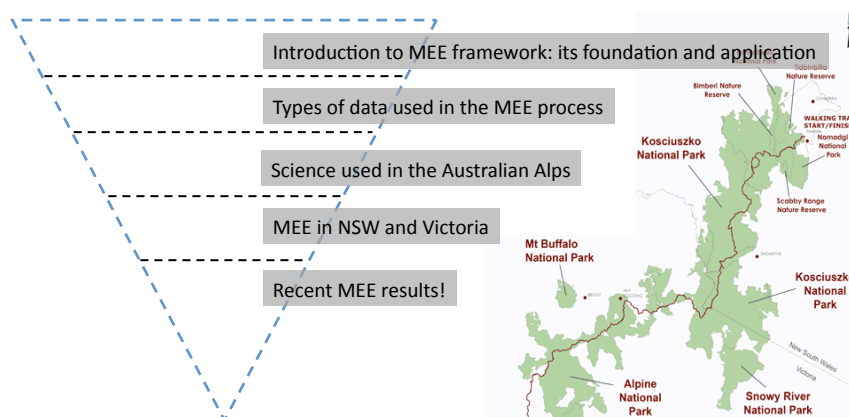
Welcome to Day 2



Healthy Parks Healthy People!



Brief review and reflection



Brief review and reflection

- Introduction to MEE framework: its foundation and application
- Why we bother
- The benefits
- International context:
 - CBD targets
 - NRS targets



Healthy Parks
Healthy People!



Brief review and reflection

- Types of data used in the MEE process
 - Qualitative vs quantitative evidence
 - Improving data quality
 - USING the results (link and align)
- Examples of how its used

Australian Alps Liaison
Committee/IUCN WCPA
Mountains Initiative
Albury 13th June 2012

**Types of data used in the MEE
Process – moving towards
evidence based decisions**

Professor Marc Hockings
School of Geography, Planning and Environmental Management
University of Queensland
Vice-Chair, IUCN World Commission on Protected Areas



Healthy Parks
Healthy People!



Brief review and reflection

- Science used in the management of the AA
 - Knowledge needs – including addressing politics in parallel.
 - Difference between manager and scientist and value of finding common objectives
 - Long term examples of using science in management

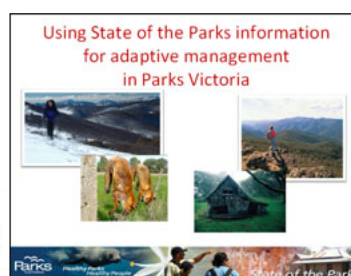


Healthy Parks
Healthy People!



Brief review and reflection

- MEE in NSW and Victoria
 - Process
 - Validation and auditing
 - How MEE data is being used
 - Closing the loop
 - Decision making trees on how to apply the data

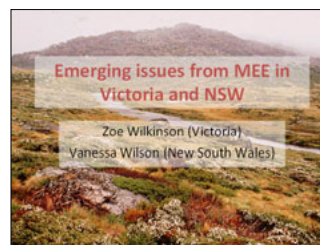


Healthy Parks
Healthy People!



Brief review and reflection

- Broad results from the 2010 State of the Parks surveys
 - Values
 - Threats
 - Approach to management and effect for
 - Natural heritage (including pests and weeds)
 - Cultural heritage
 - Visitation



Management approach natural heritage threats

	Forest	Wetlands	Heritage sites	Other	Other	Other
1. Clearing of vegetation	Green	Yellow	Green	Green	Green	Green
2. Clearing of vegetation	Green	Yellow	Green	Green	Green	Green
3. Clearing of vegetation	Green	Yellow	Green	Green	Green	Green
4. Clearing of vegetation	Green	Yellow	Green	Green	Green	Green
5. Clearing of vegetation	Green	Yellow	Green	Green	Green	Green
6. Clearing of vegetation	Green	Yellow	Green	Green	Green	Green
7. Clearing of vegetation	Green	Yellow	Green	Green	Green	Green
8. Clearing of vegetation	Green	Yellow	Green	Green	Green	Green
9. Clearing of vegetation	Green	Yellow	Green	Green	Green	Green
10. Clearing of vegetation	Green	Yellow	Green	Green	Green	Green
11. Clearing of vegetation	Green	Yellow	Green	Green	Green	Green
12. Clearing of vegetation	Green	Yellow	Green	Green	Green	Green
13. Clearing of vegetation	Green	Yellow	Green	Green	Green	Green
14. Clearing of vegetation	Green	Yellow	Green	Green	Green	Green
15. Clearing of vegetation	Green	Yellow	Green	Green	Green	Green
16. Clearing of vegetation	Green	Yellow	Green	Green	Green	Green
17. Clearing of vegetation	Green	Yellow	Green	Green	Green	Green
18. Clearing of vegetation	Green	Yellow	Green	Green	Green	Green
19. Clearing of vegetation	Green	Yellow	Green	Green	Green	Green
20. Clearing of vegetation	Green	Yellow	Green	Green	Green	Green

Legend: Green = High priority, Yellow = Medium priority, Red = Low priority

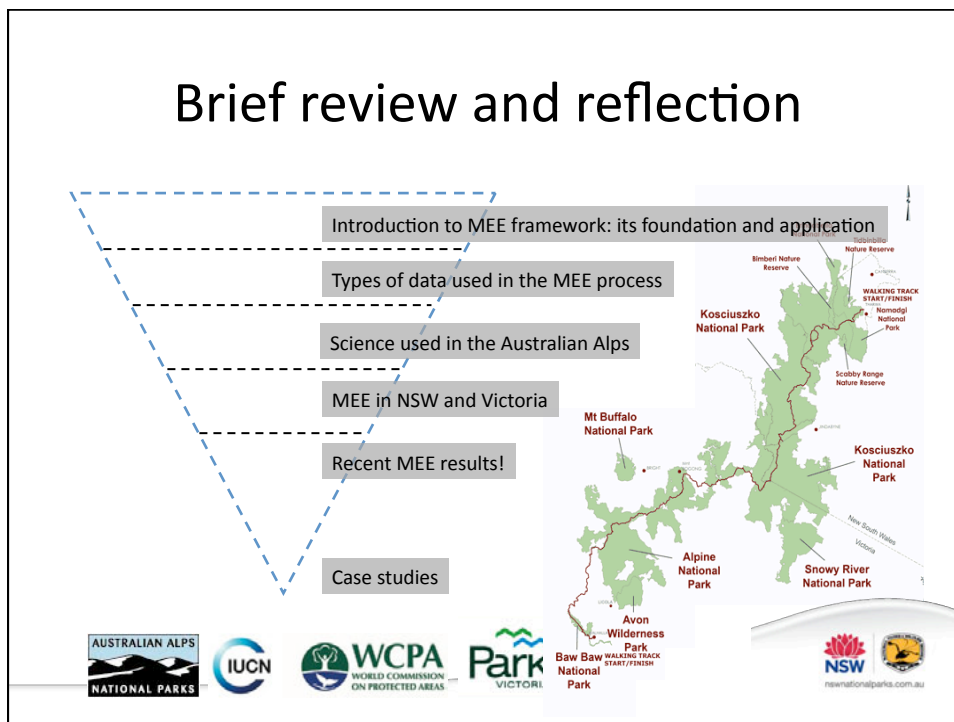


Is it worth it?

- Yes! I've found it useful because.....
- I remain unconvinced. It seems limited because....



Brief review and reflection



Examining the MEE process and findings

- Case Study's!
 - Examples of MEE application: Marc Hockings
 - Re-opening of Caves House: Mick Pettitt
 - Alps Intensive Management Program: Dan Brown
 - Wild dog management: Andrew Claridge



Healthy Parks
Healthy People



Our case studies and MEE

- To what extent do you feel that you addressed the elements of the management effectiveness framework in the implementation of your programs / projects?
- What are the lessons you've learnt?



Healthy Parks
Healthy People[®]



Examining the MEE process and findings

- Illegal activities



Healthy Parks
Healthy People[®]



Examining the MEE process and findings

- What are the objectives?
What would you want to evaluate?
- What information/
evidence do you use? Are there other sources of information that you would want to support your assessment?



Healthy Parks
Healthy People[®]



Illegal activities



Healthy Parks
Healthy People[®]



Examining the MEE process and findings: some take home messages

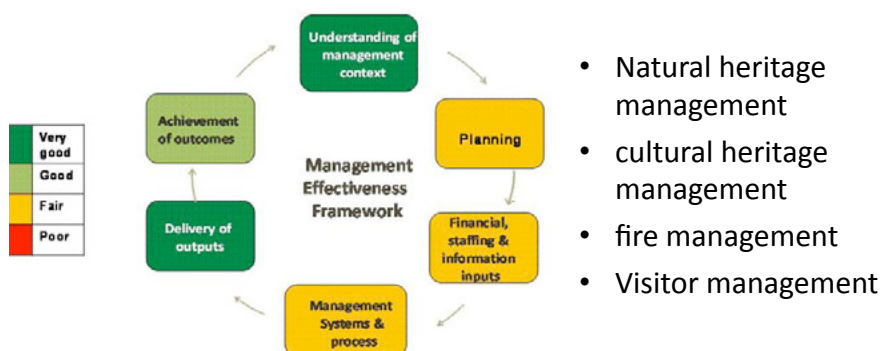
- Both the process and the findings are important elements of MEE.
- MEE should continue to be a part of our business
 - Individual programs / project management capture it
 - Built into institutional planning and processes
- Good MEE consider all elements of the framework



Healthy Parks
Healthy People[®]



Interactive workshop session: How are we tracking across the AA?



Healthy Parks
Healthy People[®]

