

Using State of the Parks information for adaptive management in Parks Victoria

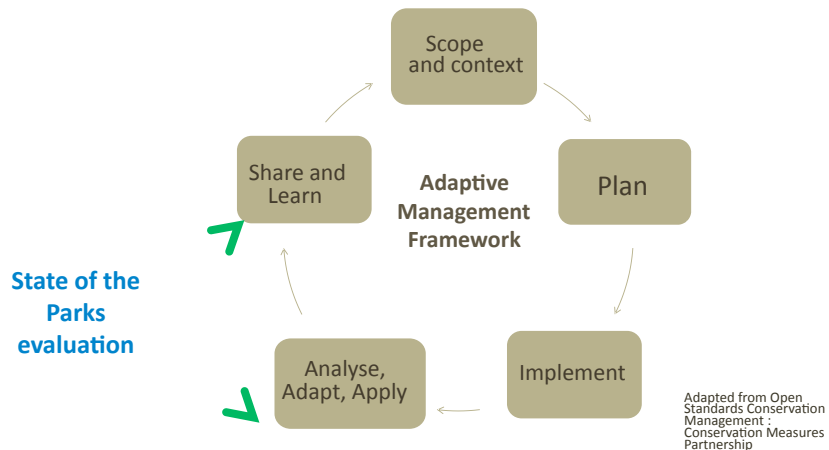


The purpose of SOP MEE

- Review outcomes of management against our core responsibilities at different management scales (parks network to park)
- Evaluate our strengths, achievements, gaps and areas for improvement
- Use SoP MEE knowledge to inform our plans and priorities (“close the loop”)
- Use SoP MEE as a knowledge sharing tool to improve management



Where does MEE (SoP) fit?

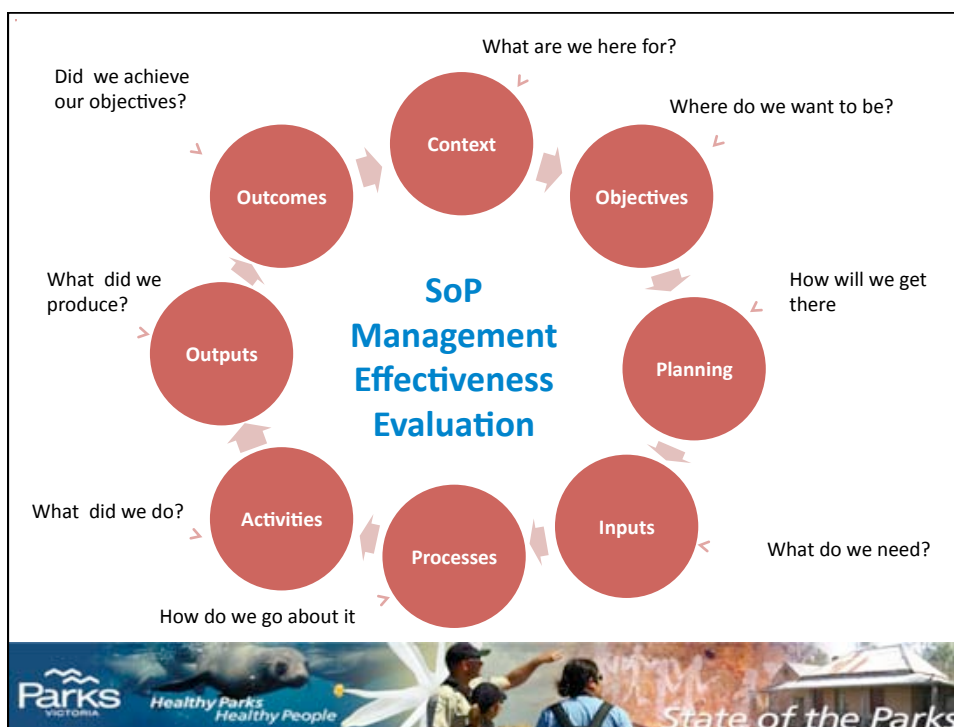


Protected Area Management Effectiveness assessments in 140 countries



SOP MEE is part of a global direction to improve park management





Roll-out Parks Victoria's SoP /MEE program

- Systematic evaluation every three years
- Around 300 parks (90% of park estate area but 10% of our 2800 parks and reserves)
- Evaluation Process – get park managers talking and sharing
- Need to gather knowledge as continuous process –not just for SoP!



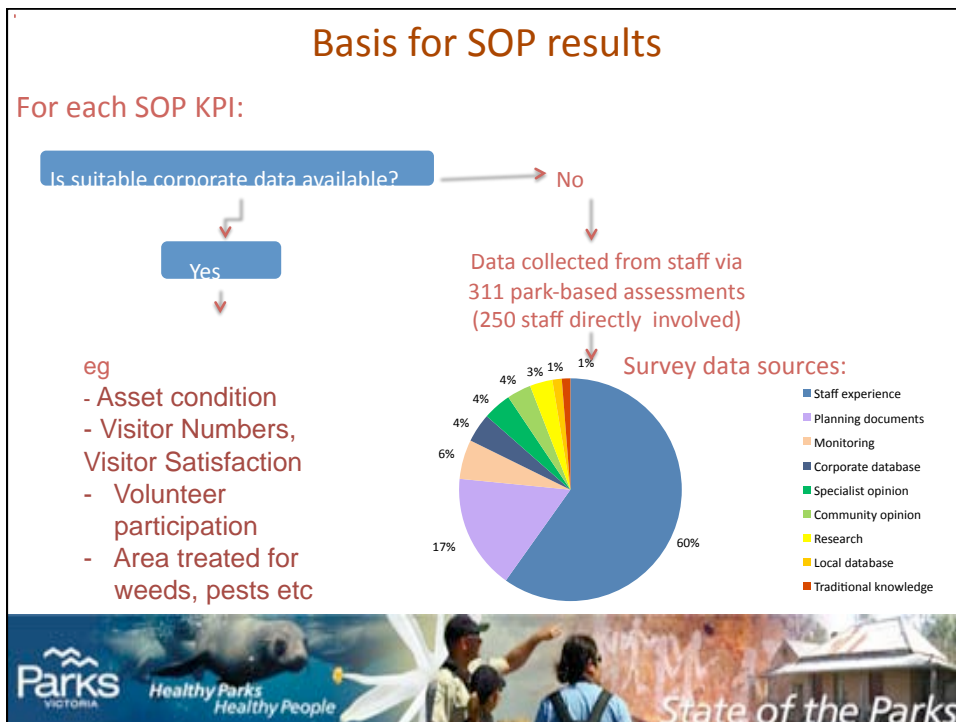
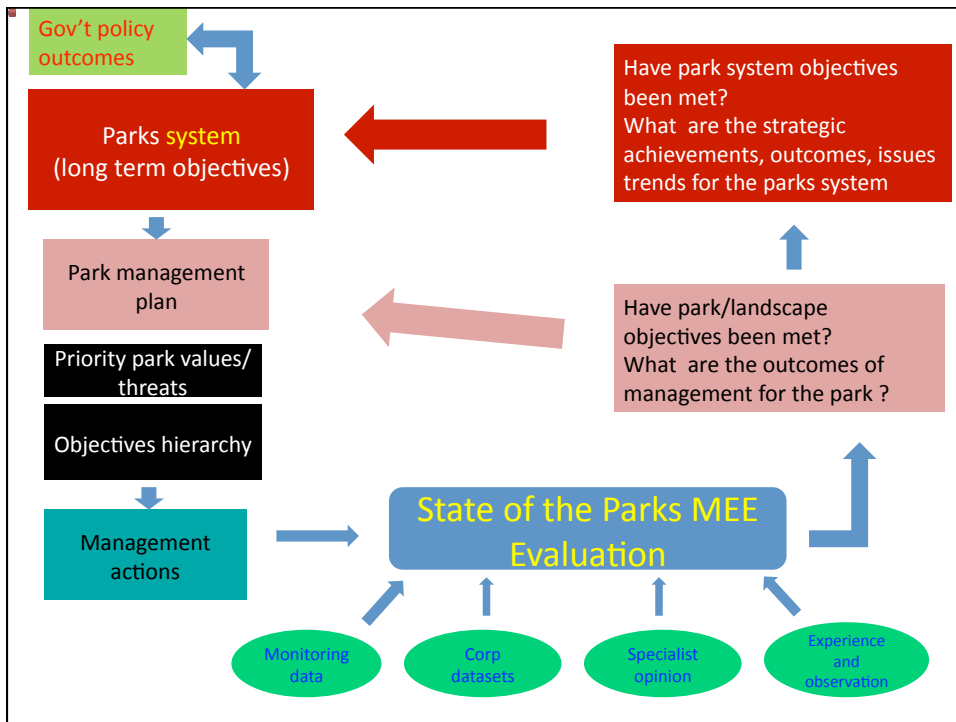
How are we using SoP MEE

- Make MEE evaluation “normal business”
- Clear framework of indicators that connects park scale evaluation to corporate KPIs
- Evaluation at range of scales for different audiences
- Evaluation (for adaptive management) vs Reporting/auditing function
- New tools to improve access and sharing of SoP information



Why do we do SoP evaluation and how will the information be used?

SoP components	Audience and products	Purpose
1. State of the Parks network assessment	<ul style="list-style-type: none"> ➢ Board ➢ Exec ➢ DSE Exec, ➢ Government ➢ External stakeholders ➢ PV Corporate strategy and output leads 	<ul style="list-style-type: none"> ➢ How are we going against our core objectives for management of Victoria's parks network? ➢ What are the system-wide achievements, current issues, emerging issues, areas for improvement? ➢ What are the big drivers of management effectiveness?
2. State of the Parks evaluation and reporting for park managers	<ul style="list-style-type: none"> ➢ Park managers ➢ Interested external stakeholders (e.g. web-based park profiles) ➢ Other land management agencies (e.g. CMA's) 	<ul style="list-style-type: none"> ➢ How are you going against your core management responsibilities? ➢ Where are you being effective and why? ➢ Where and how can you



SoP on-line park assessments

PART A
Park Attributes

e.g. size,
surrounding land-
use, LOP, LOS, TOs

PART B
Context

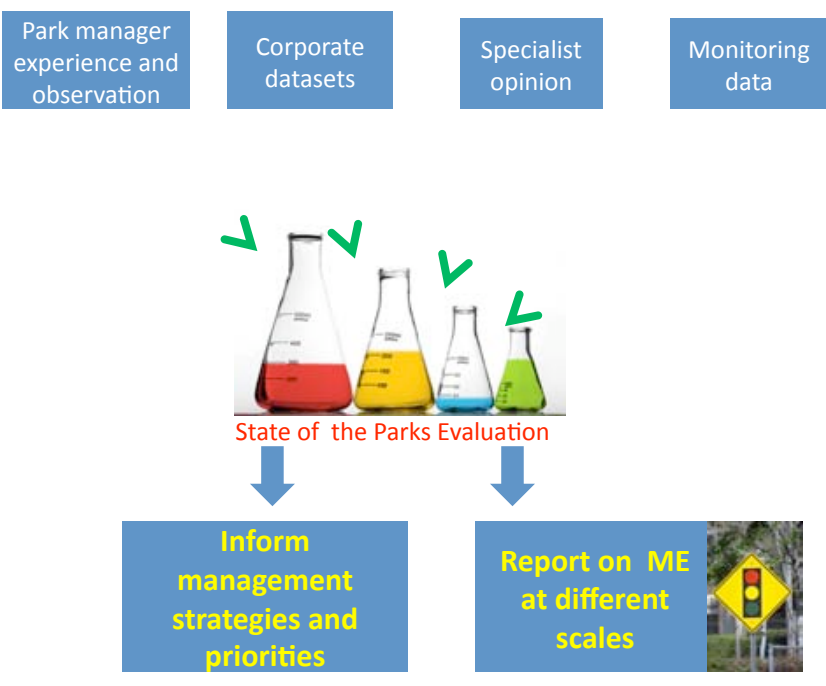
- Plans
- Key values
- Key threats
- Stakeholders

PART C
Management
Effectiveness

32 management
issues covering
NVM, CVM, VS,
F&E, Commercial

PART D
Resources

% of staff time
allocated across
outputs and
programs



Information quality and validation

- Validation plan
- Initial variable quality of results- consistency, evidence base/source of information
- 7000 queries logged and reviewed
- Feedback and follow-up with assessors prior to finalising results
- Quality will improve if staff believe SoP can be useful for them



Strengths and limitations of MEE process

Strengths

- Systematic assessment
- Gather best available knowledge
- Evaluation process as important as products
- Can't quantitatively monitor everything – two tiers
- Validation of staff



Limitations

- Is SoP a Head office reporting task or summary of best knowledge to inform park management?
- Quality of results depends on information available to assessors
- SoP is NOT a replacement for robust monitoring
- State in time vs “live”

More about ME evidence in Vic Alps

- Good long term data on condition of vegetation and some threatened spp (mostly high country)
- Currently limited long term analysed monitoring data on key threats such as invasives (but new programs recently commenced)
- Much researcher/external scientists involvement-knowledge transfer processes?
- Knowledge transfer from DSE and CMA specialists captured in SoP?



SoP products

For Park Managers

On-line "drill down" dashboard reports

SoP 2010 "profile" charts and maps

Summary report cards


For External stakeholders

Web-based Sop network report cards (in progress)

Web-based report cards for selected parks

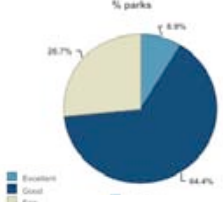
Info for various published reports (e.g. weed and pest management in parks)

Data for CMAs



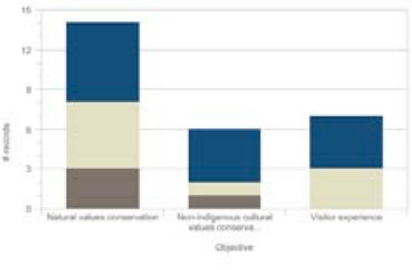
Healthy Parks
Healthy People®


Current condition of natural values – Statewide




Condition	% parks
Excellent	44.4%
Good	26.7%
Fair	8.9%

Online drill-down reports to inform decision making and reporting - available to all PV staff for all assessed parks





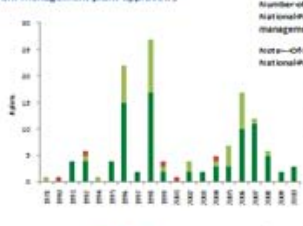



Healthy Parks
Healthy People®

2.2 Park management plans approved

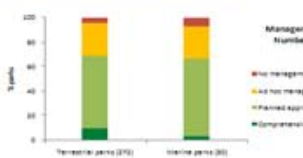
Number of management plans approved for National Park Act parks and influence on management (131 plans for 118 parks)

Note – Of 111 parks assessed for SOP 131 are National Park Act parks

2.3 Management response to natural values

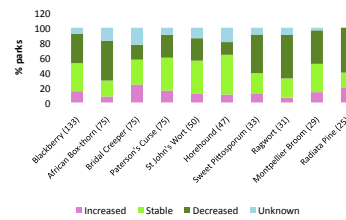
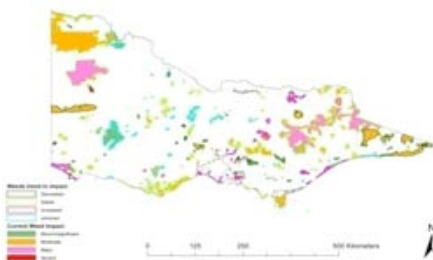
Management response to natural values – Number of parks in government brackets



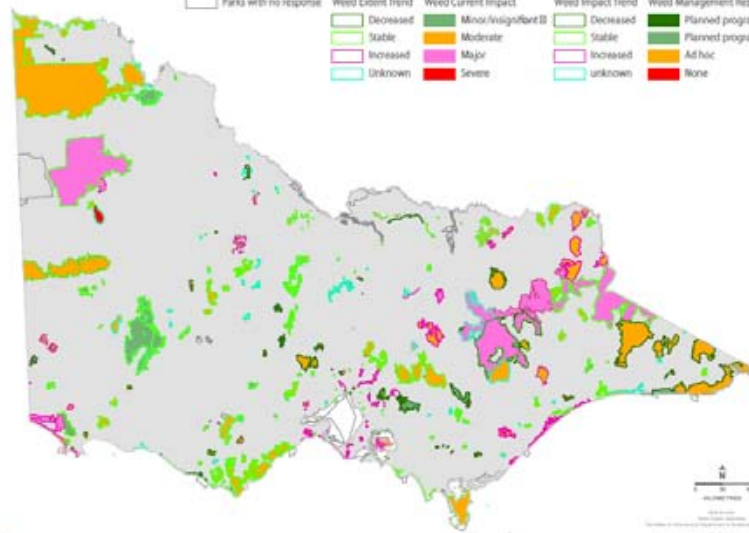
“Report card” summary results and charts

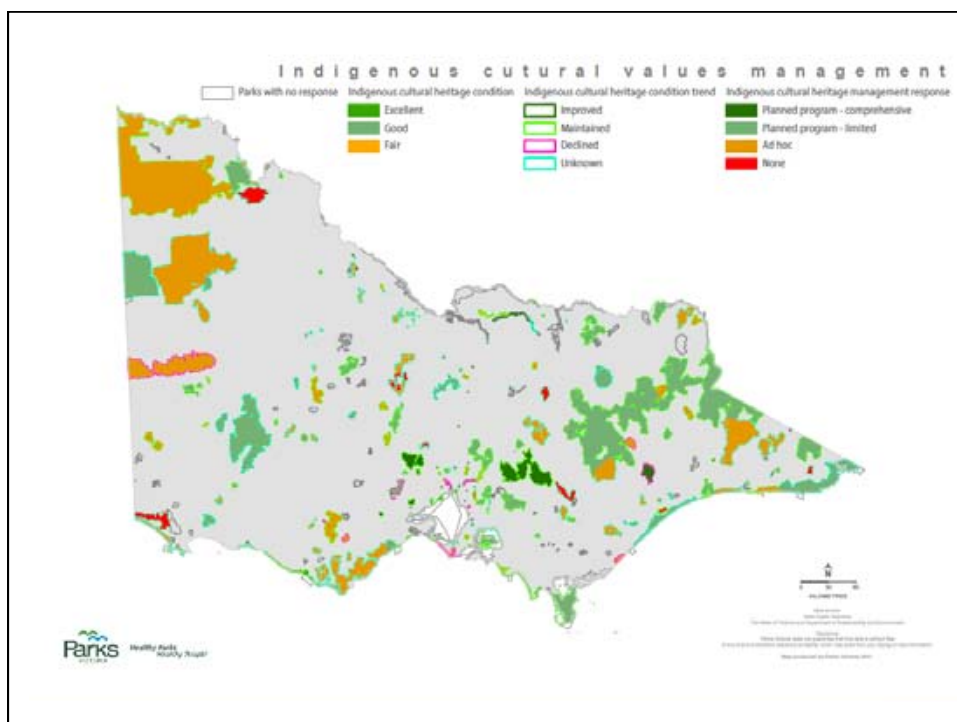
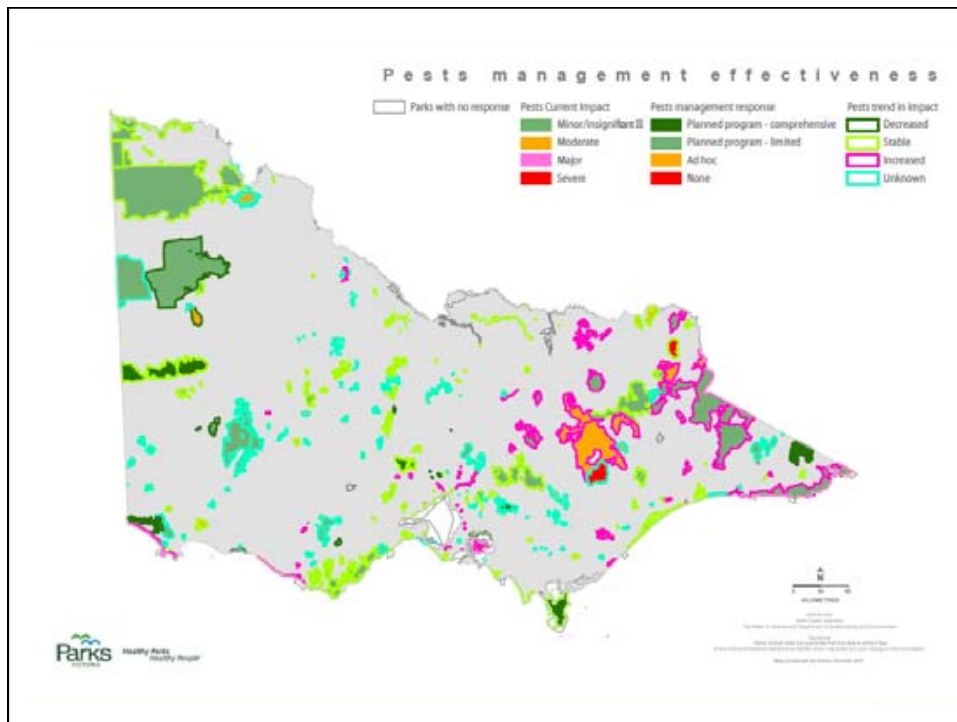
Weed management

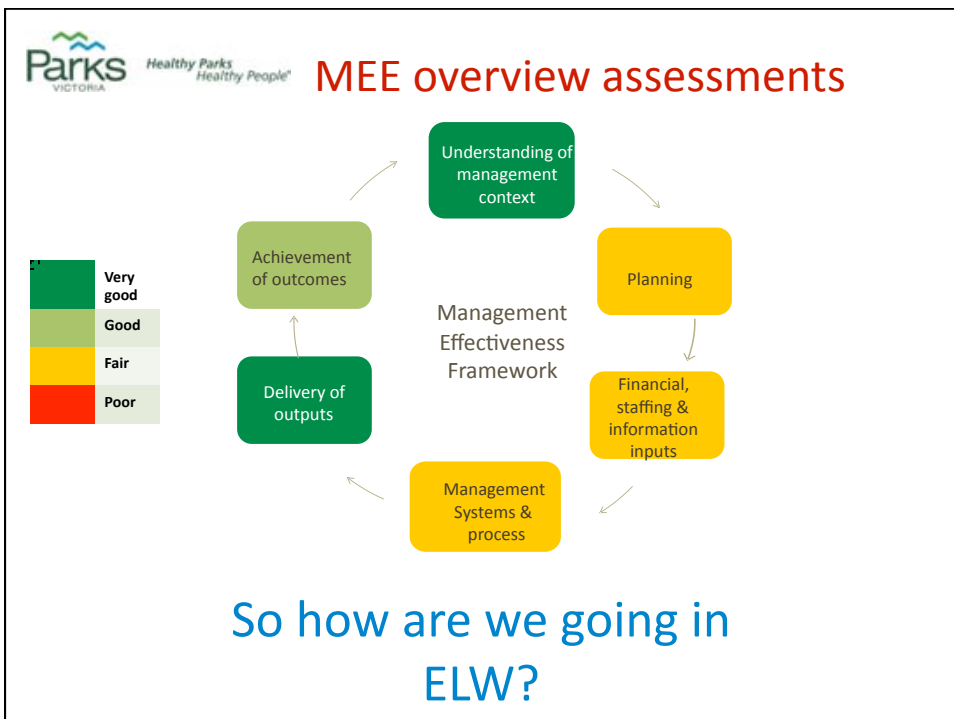
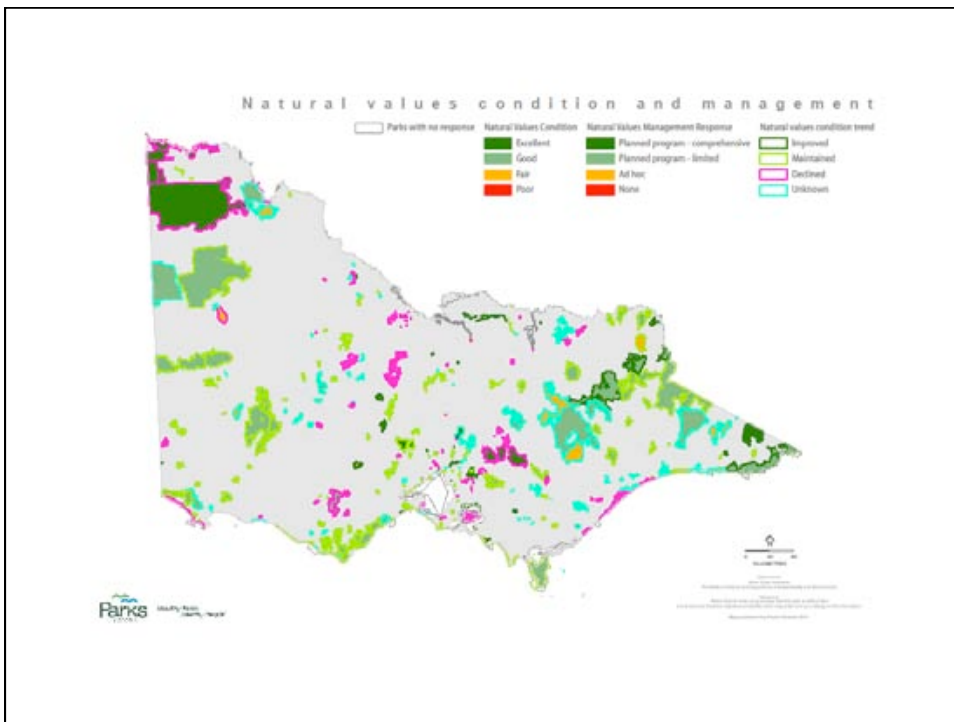
Impact of weeds % parks (#parks)					
Trend	Severe	Major	Moderate	Minor/insig	Total
↑	1.4 (4)	8.7 (24)	10.5 (29)	0.7 (2)	21.3 (59)
→	0.4 (1)	4.3 (12)	25.3 (70)	9.0(25)	39.0 (108)
↓	1.1 (3)	1.8 (5)	11.9 (33)	4.0 (11)	18.8 (52)
?	0.4 (1)	1.4 (4)	12.6 (35)	6.5 (18)	20.9 (58)
Total	3.2 (9)	16.2 (45)	60.3 (167)	20.2 (56)	100 (277)



Weed management effectiveness

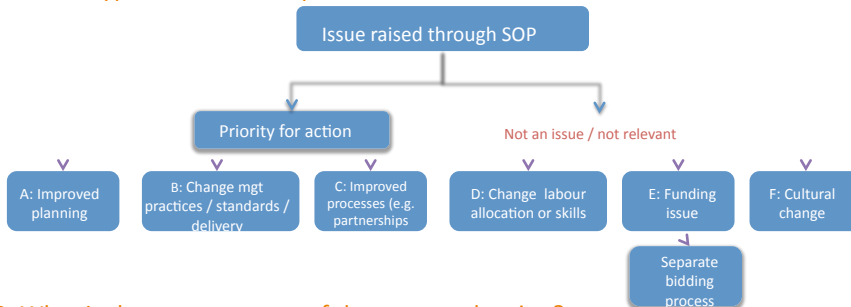




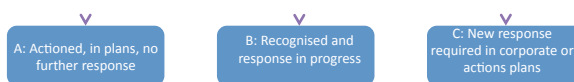


How are we using SOP MEE results?

1. What type of action is required?



2. What is the current status of the proposed action?



Application of SOP MEE results ?

